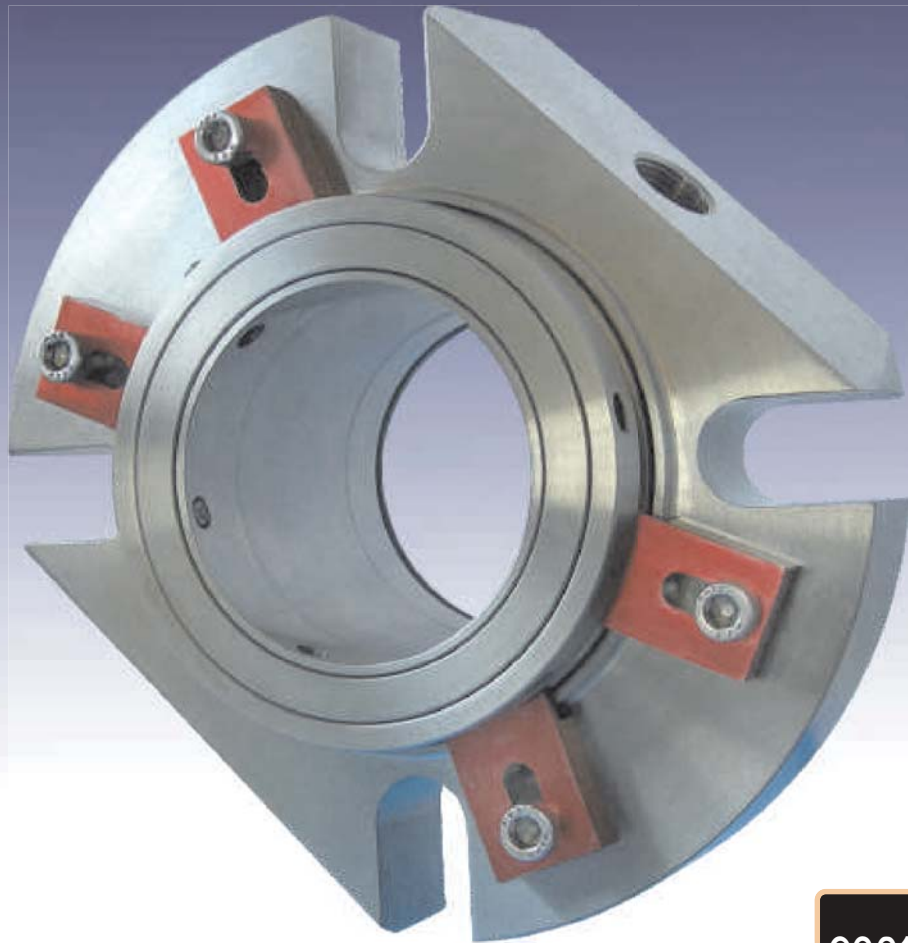


GENERAL SEAL

Cartridge Mechanical Seal for Slurry Application



TYPE 255 / TYPE 2552

ISO
9001:2000
CERTIFIED COMPANY

 **GENERAL SEAL**
COMPANY PVT LTD

Excellence In Engineered Sealing Systems
...Since 1980

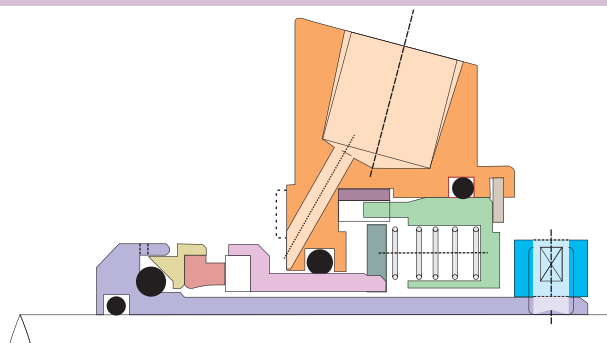


TYPE 255 Single/ TYPE 2552 Double CARTRIDGE MECHANICAL SEALS For slurry Pump Sealing

- **Hydraulically Pressure balanced Seals.**
- **Tailor-made for individual customer requirements.**
- **Independent of direction of rotation.**
- **Sturdy design of components to withstand severe operating conditions.**
- **Design & material can be made to conform to all International standards (ISO 21049/ API-682, En-12756, DIN-24960)**
- **Prolonged seal life by use of highly wear-resistant sealing elements.**
- **Many insightful features in the design.**
- **All components manufactured on state-of-the-art CNC Machining systems.**
- **All Hard-Facings made by ultramodern plasma deposition and plasma welding processes.**
- **Simple, 3-step installation procedure.**
- **Repeated re-use through reconditioning program.**



TYPE 255 Single Seal Cartridge



Inner Rotary Seal Ring (with hard-facing) has Self-aligning feature to assure constant contact with Stationary Seal Ring.

Seal components inside the slurry medium have no moving/sliding parts, so there is no possibility of jamming or sticking open.

Static O-ring in contact with shaft means seal-included shaft damages just cannot occur.

Hydraulically pressure-balanced seal faces ensure longer seal life under severe running conditions.

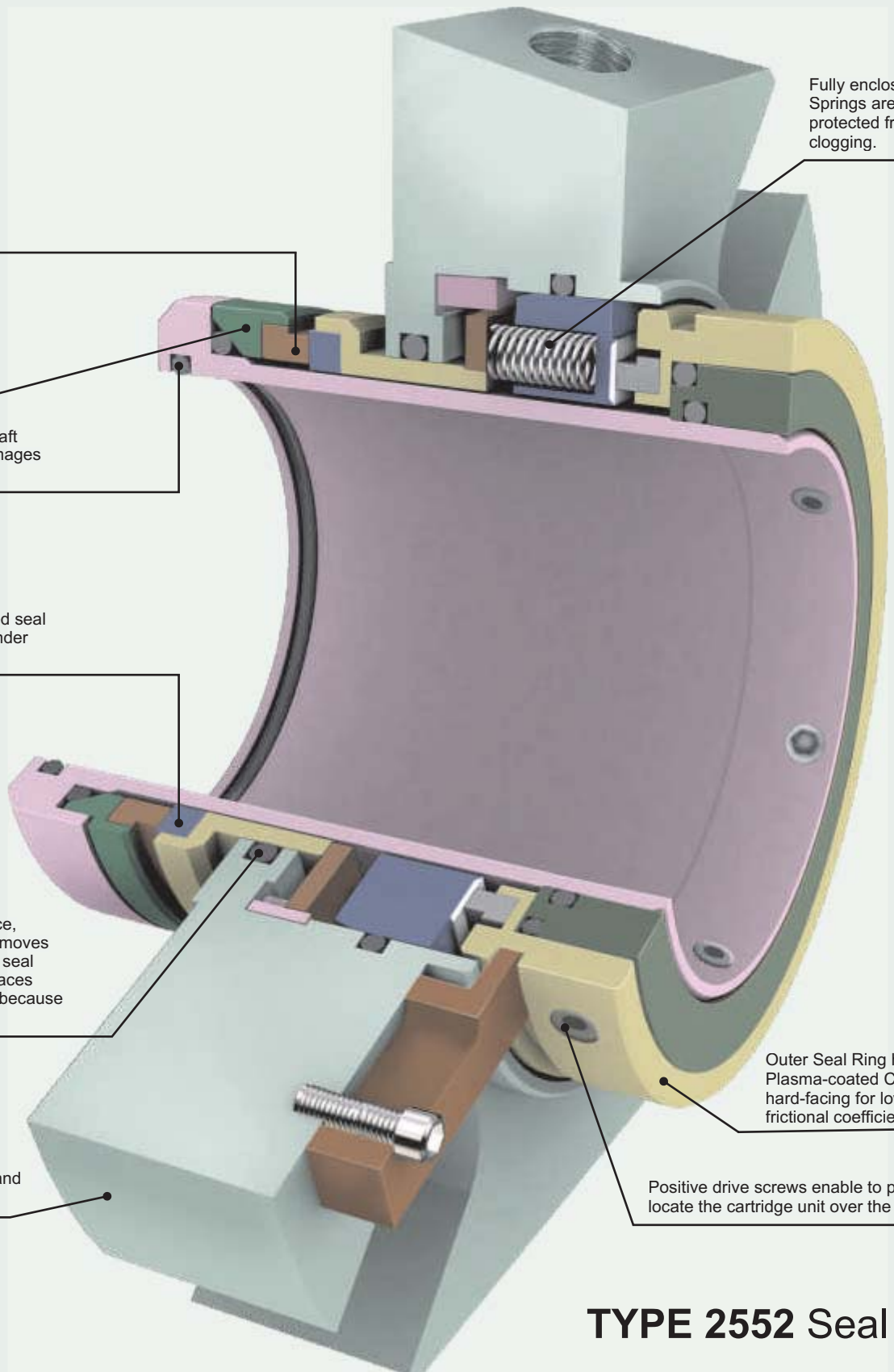
When seal faces wear in service, the inner Stationary Seal Ring moves smoothly outwards to maintain seal face contact as the sliding surfaces remain unclogged by deposits because of the static o-ring protection.

Cartridge Covers enclose sturdy components that withstand severe running conditions.

Fully enclosed Springs are protected from clogging.

Outer Seal Ring has Plasma-coated Ceramic hard-facing for low frictional coefficient.

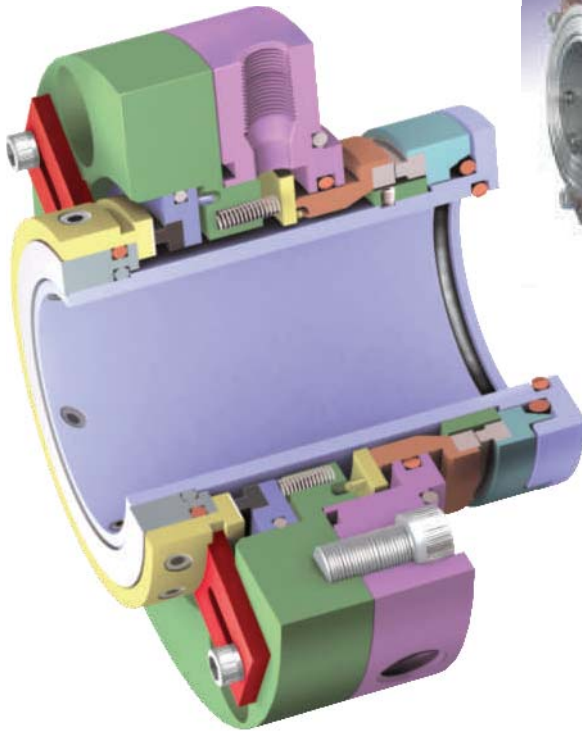
Positive drive screws enable to precisely locate the cartridge unit over the shaft.



TYPE 2552 Seal

Type 2442

Double Seal Cartridge



Type 255 Single and Type 2552 Double Cartridge Mechanical Seal.

- Hydraulically Pressure balanced seal faces.
- Bi -Directional
- Heavy-duty components
- Compact fitment dimensions.
- No seal induced shaft damage.
- Springs isolated from working fluid.
- Ideal replacement for "Cartex" seal
- Long life due to careful selection of component parts.
- Repeated reconditioning possible for reducing cost of seal renewal.

Operating parameters *

Pressure	upto 35 bar
Temperatures	upto 150°C
RPM	3000

* For more rigorous applications, consult General Seal



GENERAL SEAL COMPANY PVT LTD

Excellence in Engineered Sealing Systems

PLOT NO. D-29/10, MIDC-TTC INDUSTRIAL AREA, NEAR TURBHE
TELEPHONE EXCHANGE, NEW MUMBAI - 400 705, INDIA.
TEL.: (22) 27672687, 27686662, 27634265, 27634129,
FAX.: 91-22-27632839, 27610380
Email : info@generalseals.com Website: www.generalseals.com